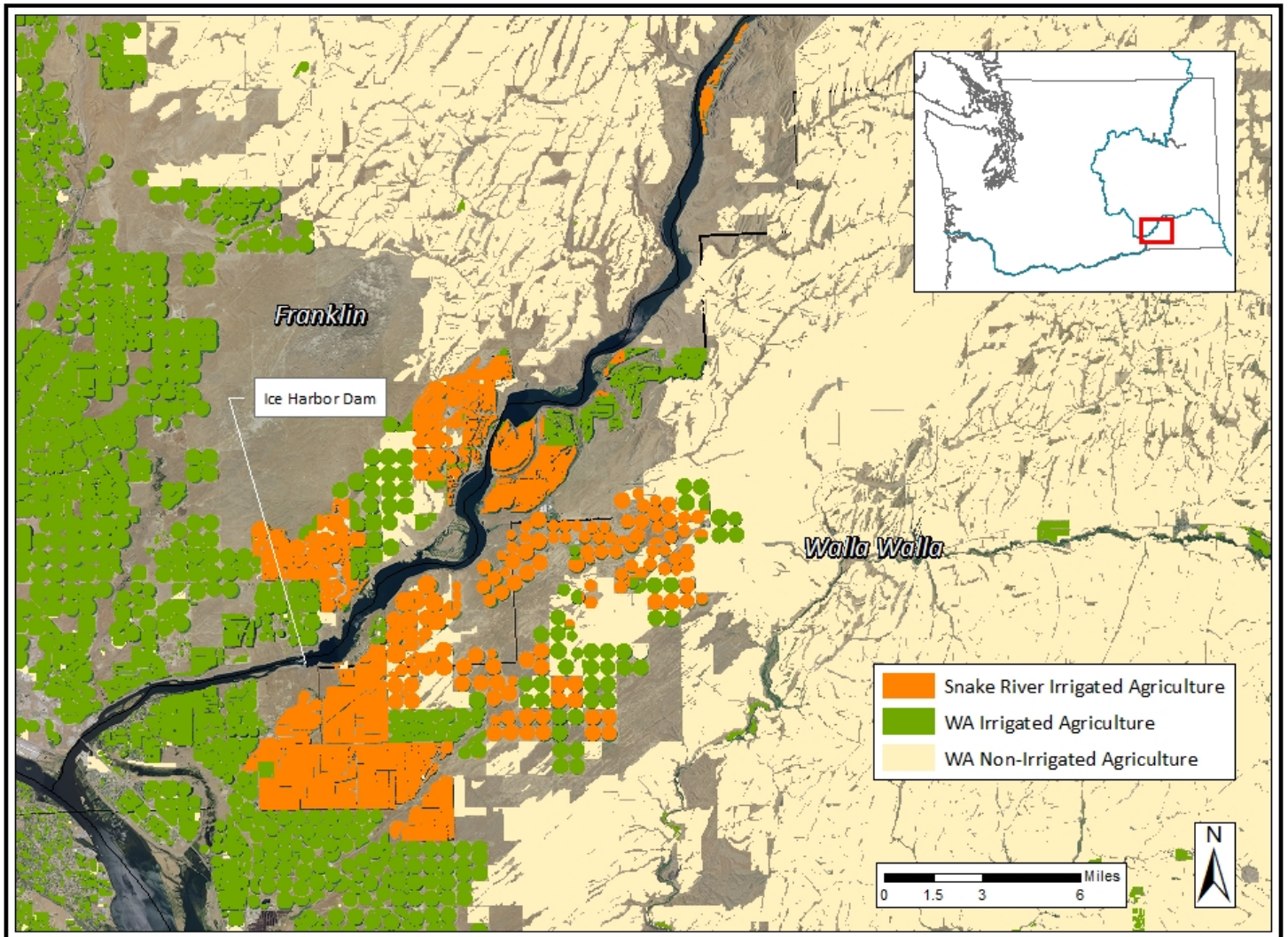


Snake River Irrigation

Claim: *The reservoir behind Ice Harbor Dam on the Lower Snake irrigates about 60,000 acres of cropland. – The Spokesman Review, 24 October 2016.*



Earth Economics' analysis finds that the maximum irrigated acreage supplied by the Ice Harbor reservoir is 35,155 acres.

Total Irrigated Acres	35,155
-----------------------	--------

Source: Washington State Department of Ecology Water Resources Explorer, USDA